

# 350 W BLDC IN-RUNNER MOTOR SPECIFICATIONS



[www.meghneel.co.in](http://www.meghneel.co.in)

# JR120-350W-1500 RPM

## Highlights

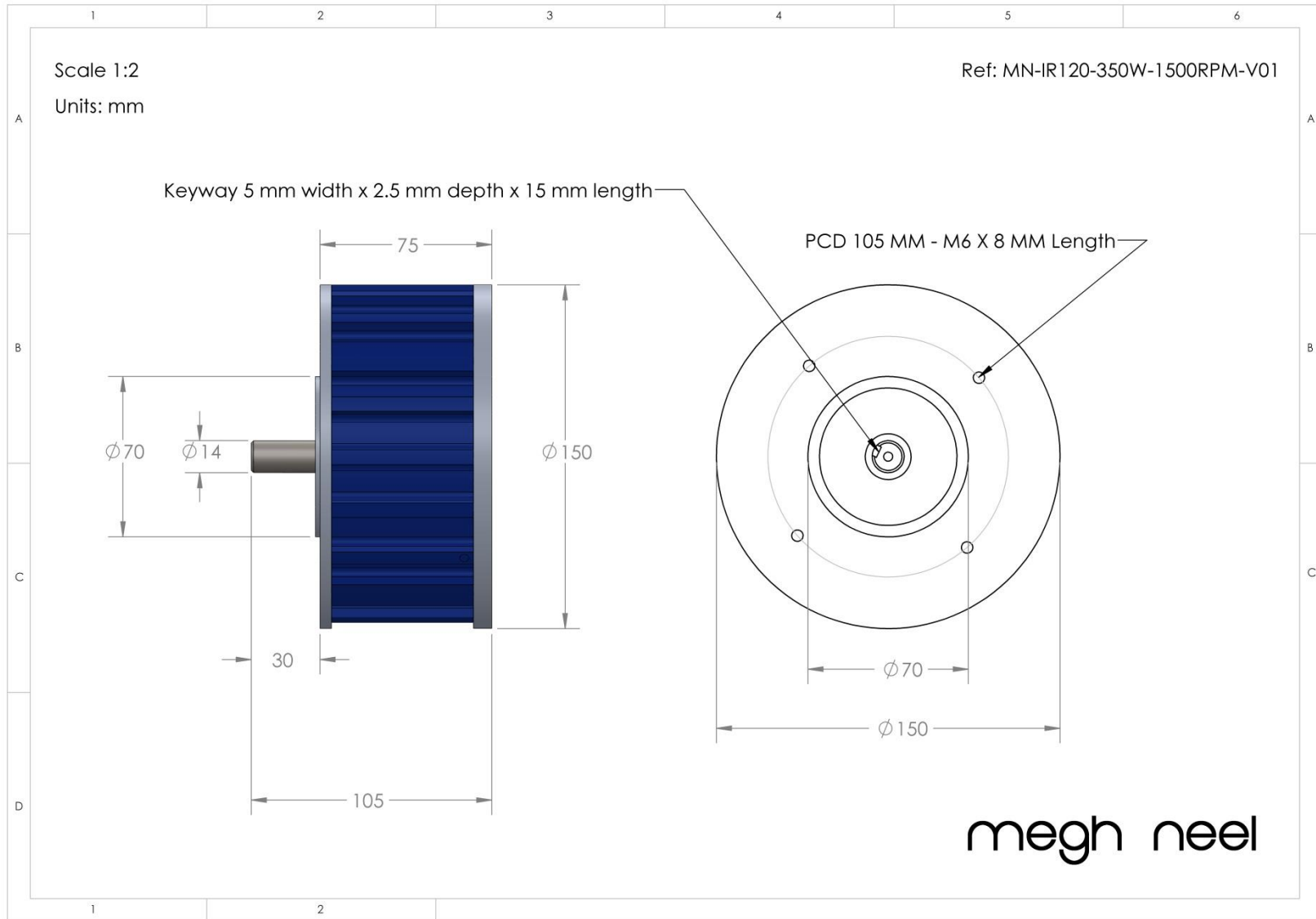
- ✓ 350Watts (Input), 1500 RPM Brushless DC Motor
- ✓ In-runner rotor
- ✓ Operating temperature up to 80°C
- ✓ External Control with Sensored commutation
- ✓ Also available in 24 and 48 VDC
- ✓ Made in Coimbatore, India

## Specifications

Parameter	Value
Rated Voltage	36VAC
Rated Current	10 A
Peak Current	20 A
Rated Power (Input)	350 Watts
Rated Speed (RPM)	1500 RPM
Rated Torque (Nm)	1.9 Nm
No Load Current (A)	< 1.0 A
No Load RPM	1800+ RPM
Current Density (A/square mm)	4 A/square mm
Variable Speed Range	0-2000 RPM
Motor Mounting	Face
Motor Dimensions	150 mm diameter x 55 mm width
Shaft Diameter	14 mm
Shaft Length	20 mm length
Finish	Powder Coated
Weight	4 Kilograms (approx.)



# Dimensions



## Controller Specifications

Parameter	Value
Rated Voltage	24/36/48VDC
Controller Current Limit	15 A
Variable Speed	3 Pin Plug with analog voltage input from 0 to 5VDC 5VDC – Maximum Speed 0.8VDC – Start Motor 0VDC – Stop Motor
Commutation	Sensored
Reverse Option	2 Pin (Short the pins to enable half speed reverse)

## Connection Sequence

**Supply:** Connect the 24/36/48V Positive Supply to the Controller Red Wire via a key switch. Connect the Battery Negative terminal to the Controller Black Wire.

### Motor Connection:

Connect the Controller Phase Wires to the respective wires from the motor as given below

Motor Phase Connection	Yellow	Blue	Green
Controller Phase Connection	Yellow	Blue	Green

Connect the 6 pin motor sensor plug to the controller sensor input plug. After powering ON the controller, connect the white “self study” male & female plugs to help the controller determine the right commutation sequence and motor running direction. Make sure that the motor is not loaded when performing this step. Once the motor starts running, disconnect the plugs. If you require the motor to run in the opposite direction, perform this step again.



## Throttle / Accelerator

Connect the 3 pin connector (Red, Black, Green) to 3 pin on the board. While connecting, ensure that the color codes match as per the diagram provided. Red: +5 VDC, Black: Ground, Green: 0-5 VDC

## Reverse

Short the 2 pins indicated in the diagram to achieve reverse direction.

## Contact Information

### Registered Office:

Megh Neel Renewable Power Systems Private Limited,  
2/19, Elite Avenue,  
Near Shivaram Nagar, Ganapathy,  
Coimbatore – 641006

Mobile: +91-98410 79631 (Navin), +91-7708066207 (Sales)

Email: [sales@meghneel.co.in](mailto:sales@meghneel.co.in)

Web: [www.meghneel.co.in](http://www.meghneel.co.in)

## Intellectual Property Rights

The information shared in this document is protected by Intellectual Property Rights and the receiving party shall refrain from disclosing, reproducing, summarizing and/or distributing Confidential Information and confidential materials obtained either directly or indirectly, in writing, orally, by inspection of tangible objects (including, without limitation, documents, prototypes, samples, media, documentation, discs and code).

